



# Emergency Preparedness

---

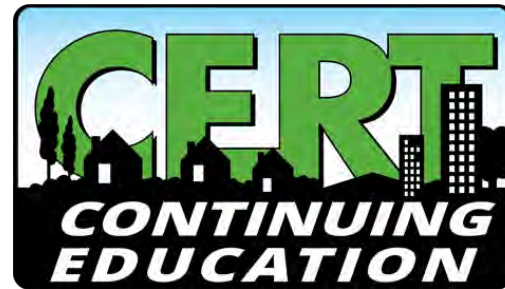
CITY OF KIRKLAND

OFFICE OF EMERGENCY MANAGEMENT (OEM)

# What does OEM do?

---

Work to provide information for readiness, response and recovery for all hazards

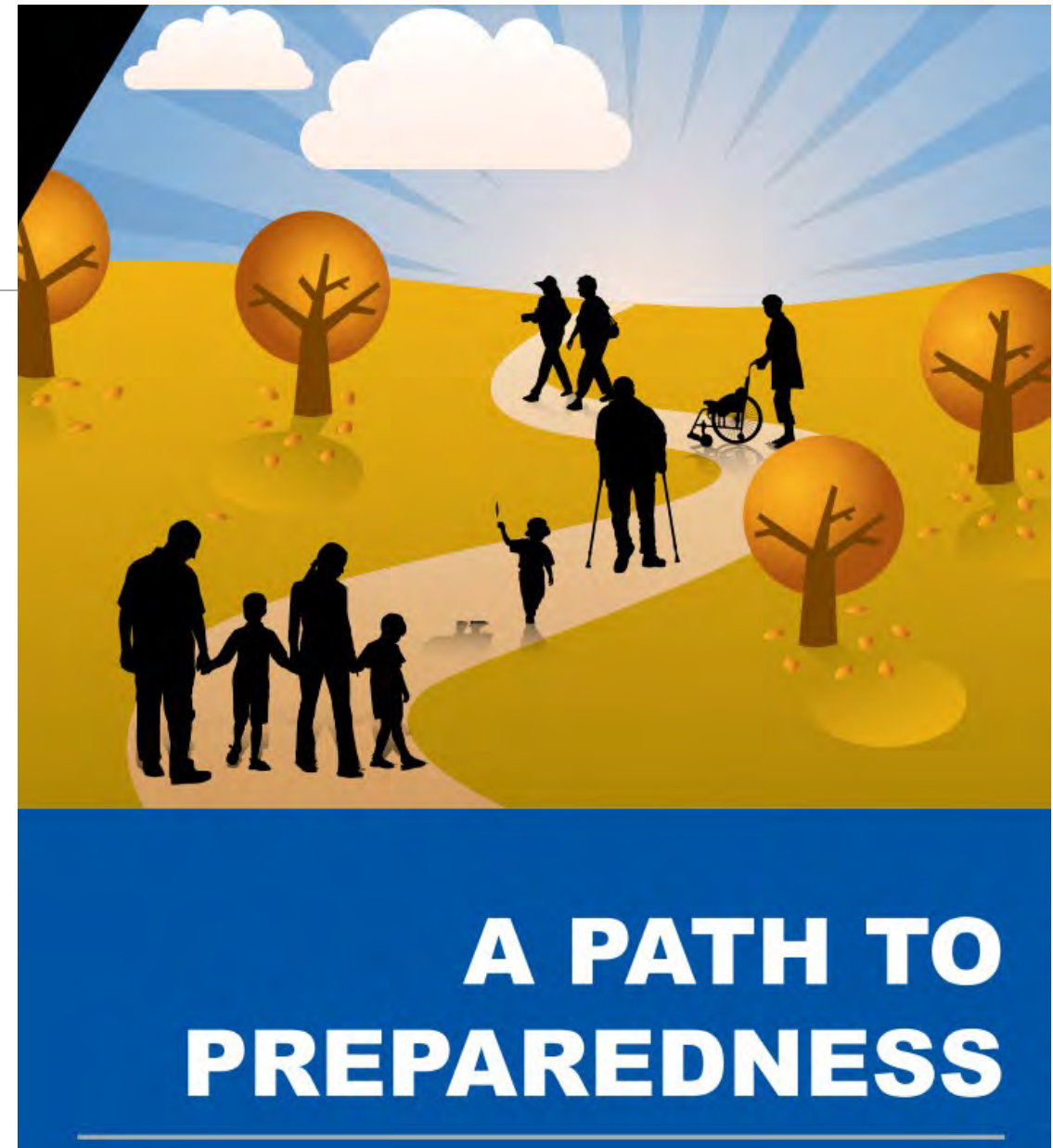


[kirklandwa.gov/KirklandEM](http://kirklandwa.gov/KirklandEM)

# Outline

---

- Reasons to Prepare
- What is a Disaster?
- Local Hazards
- Ways to Prepare:
  - Build a Kit
  - Make a Plan
  - Get Involved
- Questions



# Reasons to Prepare

---

- Kirkland has about 20 firefighters on duty at a time and almost 100,000 residents.
- Emergency responders might take 2 weeks or more to reach everyone.



# Local Hazards

---

- Earthquakes
- Severe Weather: Summer Heat, Winter Weather, Storms
- Power Outages
- Building Fires
- To check out other hazards go to our website:
  - [www.kirklandwa.gov/KirklandEM](http://www.kirklandwa.gov/KirklandEM)



# What is a Disaster?

---

- An event that causes significant loss beyond the scope of local resources



# Protective Actions

---

- Avoid what you can
- Don't go out in bad weather
- Never drive through floodwater
- Evacuate if instructed to



# Personal Preparedness

---

- Build a Kit
- Make a Plan
- Get Involved







# Build A Kit — Water

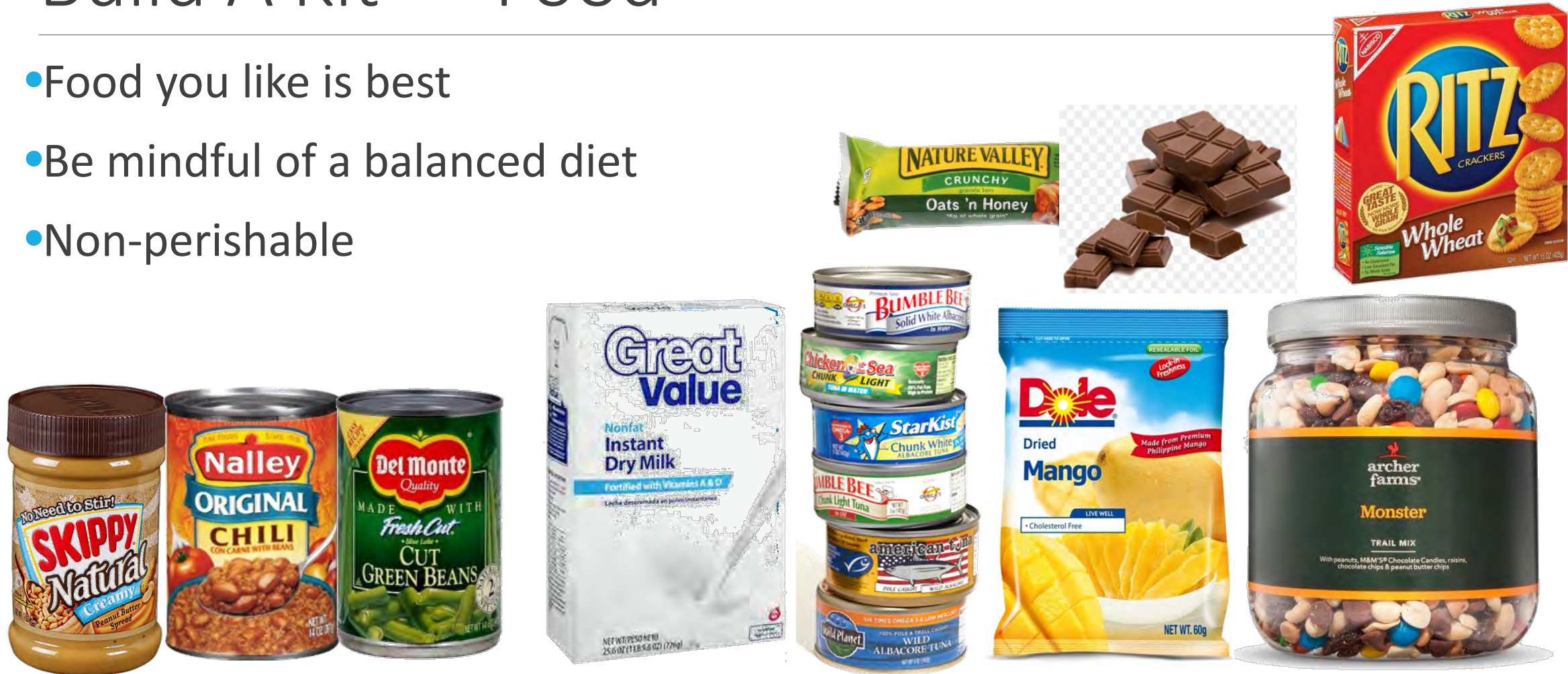
---

- Recommended to change when you change your clocks: fall behind and spring forward



# Build A Kit — Food

- Food you like is best
- Be mindful of a balanced diet
- Non-perishable



# Build A Kit — First Aid Kit

---



- Add additional items to meet your specific needs
- Items could be useful in the event of a pandemic or another widespread health emergency

# Build A Kit — Medical Needs

---

- Have extras in your preparedness kit
- Eyeglasses, hearing aids, extra batteries, etc.
- Prescription medications
- Personal hygiene products
- What do you need everyday?



# Build A Kit — Light and Heat

---

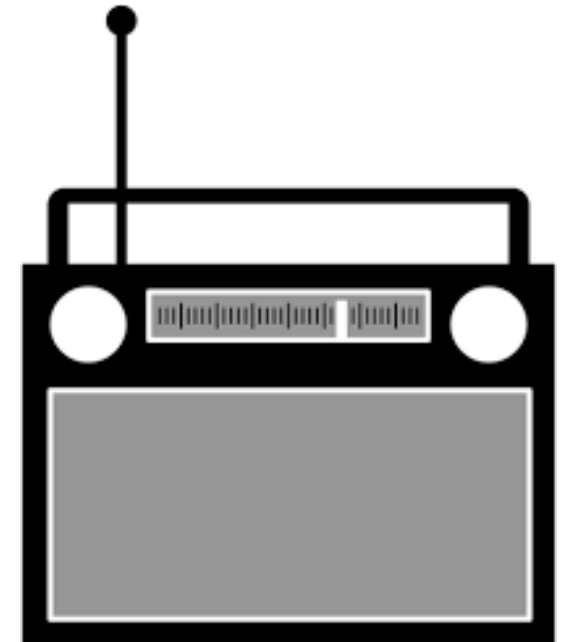
- No candles



# Build A Kit — Know How to Get Information

---

- Email updates
- Emergency Alerts on Your Phone
- Radio updates for some



# Build A Kit — Important Papers

- Small amounts of cash
- Important documents
- Have phone numbers and important information in a back up location other than your phone



## GATHER IMPORTANT INFORMATION AHEAD OF TIME



copies of  
medical insurance  
cards



contact info for  
health providers,  
caregivers,  
and family



list of medical  
devices and  
medications

# Make a Plan — Communications

---



**DEVELOP A COMMUNICATIONS PLAN**

- 

Write down emergency contact information
- 

Texts are more likely to go through
- 

Have an extra cell phone charger and batteries
- 

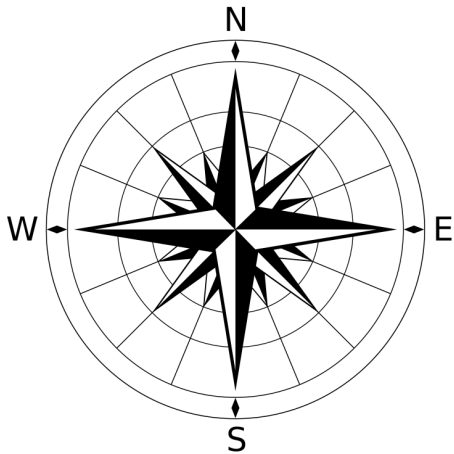
An out-of-area contact can serve as a relay point for family communication



# Make a Plan — Evacuation

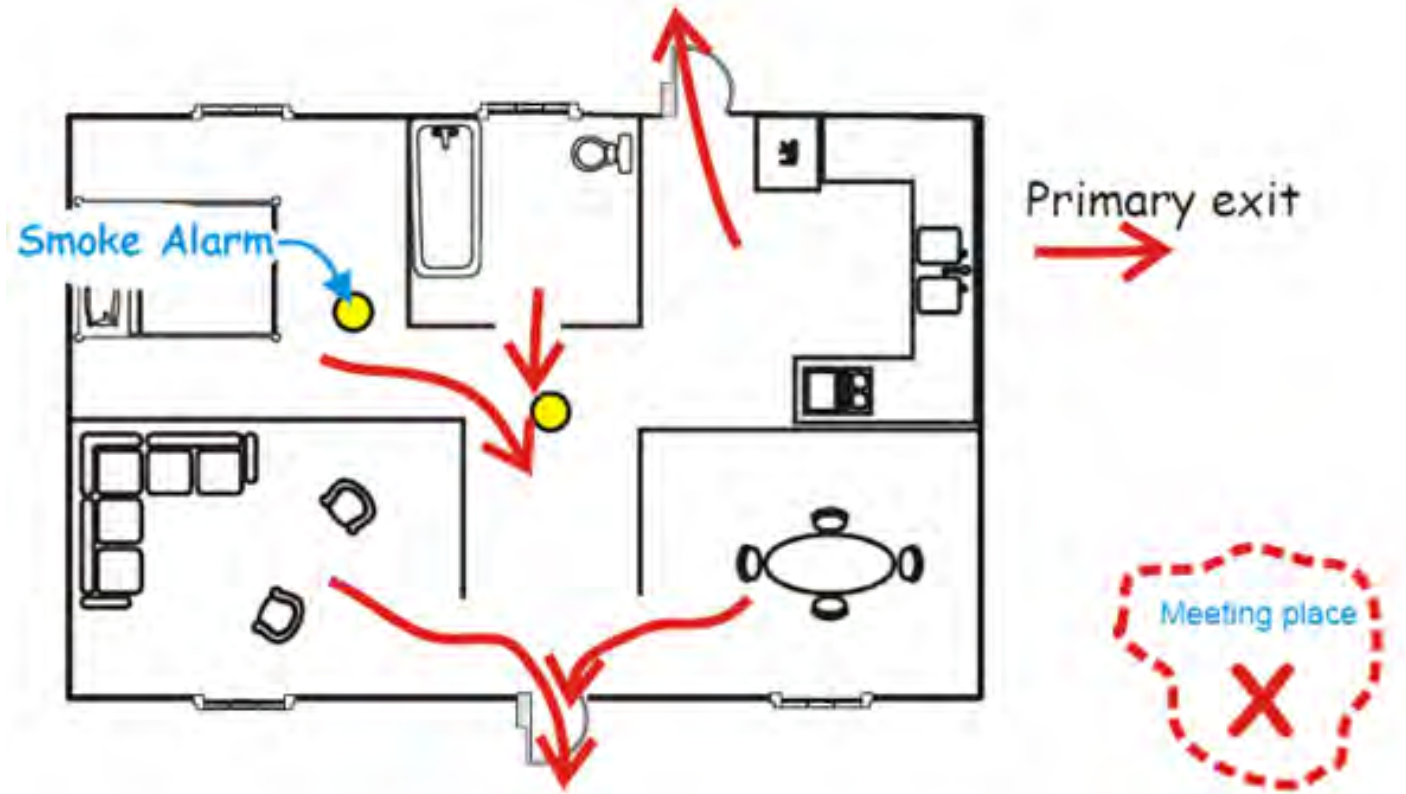
---

- Know local and out-of-area places to stay
  - Family or friends
- Plan multiple routes to get places



# Make a Plan — Household Evacuation

- Know escape routes
- Establish a meeting place
- Practice the plan!



# Make a Plan — Earthquake Safety

---



# If You Can't Drop, Cover, Hold ON

- Find the safest place
- Driving? Stop when safe
- In bed? Protect your head
- Wheelchair? Lock wheels, and protect your head
- Outside? Avoid what might fall



# Make a Plan — Weather Safety

---

- Be ready to shelter-in-place
- Power outage safety
- Weather Safety Items:
  - Items to be mindful of heat in the summer
  - Winter driving supplies for your car
- Take care of repairs early



# Get Involved

Public Education Sessions

Community Emergency Response Training (CERT)

Kirkland Emergency Communications Team (KECT)

Presentations for Large Groups

Catch us at Summer Markets!

[kirklandwa.gov/KirklandEM](http://kirklandwa.gov/KirklandEM)



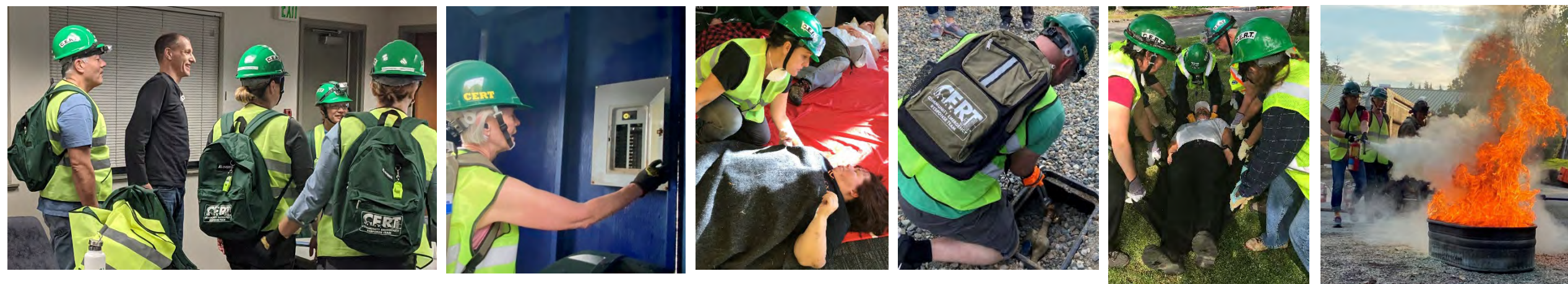
Let's Chat: Emergency Preparedness Basics



# Get Involved – CERT

## CERT – Community Emergency Response Training

- Teaches individuals how to prepare their homes and neighborhoods to respond to a disaster
- Learn skills like disaster first aid, fire suppression, utility safety, personal preparedness, search and rescue techniques and more!



[kirklandwa.gov/CERT](http://kirklandwa.gov/CERT)

# Get Involved – KECT

---

## Kirkland Emergency Communications Team

- Licensed HAM Radio Operators



[kirklandwa.gov/KECT](http://kirklandwa.gov/KECT)



# Be Informed

---

- Sign up for the Office of Emergency Management's Newsletter
  - [www.kirklandwa.gov/KirklandEM](http://www.kirklandwa.gov/KirklandEM)
- To see additional updates:
  - On Twitter you can follow @Kirklandgov or @KirklandWAPD
  - On Facebook search "Kirkland, WA – Government"
- Here's a link to sign up for King County Alerts
  - <https://kingcounty.gov/depts/emergency-management/alert-king-county.aspx>

# Be Informed

---

To check out more information visit our website:

[kirklandwa.gov/Prepare](http://kirklandwa.gov/Prepare)

To sign up for classes visit:

[kirklandparks.net](http://kirklandparks.net) and look under the “Emergency Preparedness” Tab

If you have questions, email us: [KirklandEM@kirklandwa.gov](mailto:KirklandEM@kirklandwa.gov)

[kirklandwa.gov/KirklandEM](http://kirklandwa.gov/KirklandEM)

# Thank you!

---

Questions?

