

Here Comes

Advertising Supplement to  
**The Seattle Times**  
Sunday, October 18, 1967

ALL NEW

# Kingsgate



**3 OUTSTANDING  
BUILDERS**

**14 FURNISHED  
MODEL HOMES**

**THE PLANNED COMMUNITY  
WITH A "SPACE-AGE" PARK**



# ON A PLATEAU WITH A WESTERN EXPOSURE

*This is  
all New*

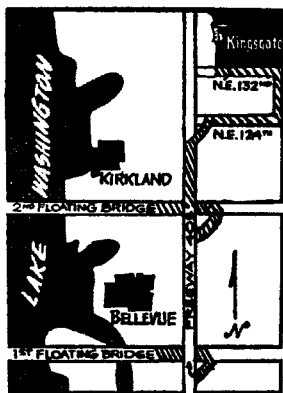
# Kingsgate

Kingsgate is not just a place to live. It is a preferred "way of life".

- 1. Complete Underground Utilities
- 2. Street Lights
- 3. Sidewalks
- 4. New Space Age Recreation Park
- 5. Every lot elevated above street level
- 6. Beautiful tree-studded lots
- 7. Winding boulevard streets

## THE TIME IS NOW

According to the real estate editors of both Seattle Metropolitan newspapers as well as leading business executives, now is the time to buy a new home. The Greater Seattle area is in the first throes of what is to be a ten-year acceleration period. Prices of homes will continue to rise. Land will become more scarce, thus more valuable. Cost of production will go up. So, to those who intend to upgrade their living . . . to purchase a new home . . . NOW is the time.

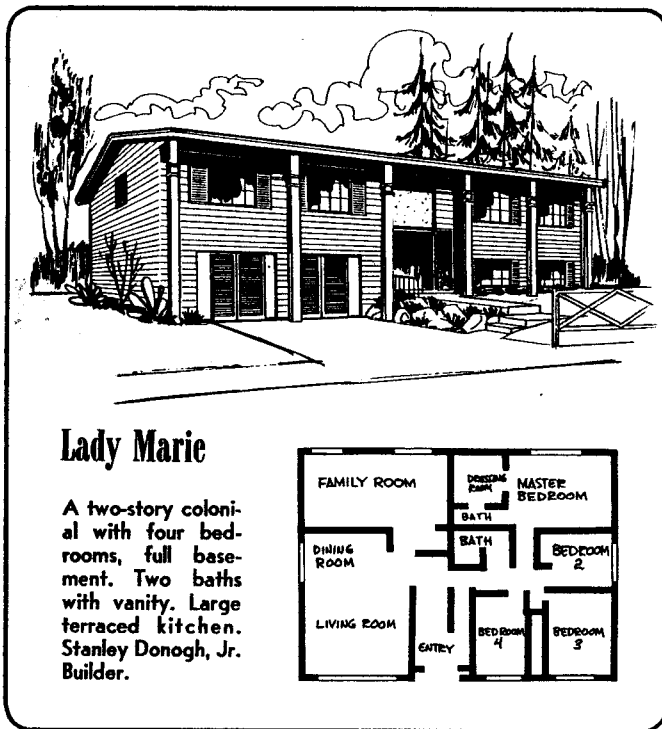


### DIRECTIONS

Cross over Floating Bridge of your choice. Drive North on Freeway 405 past Kirkland and follow Kingsgate signs. Turn right on N.E. 124th.

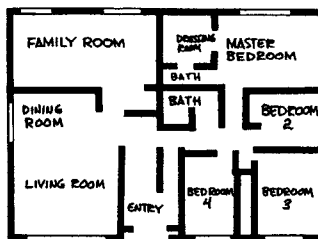
### NORTH END RESIDENTS:

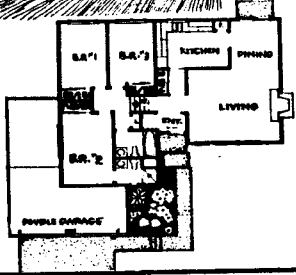
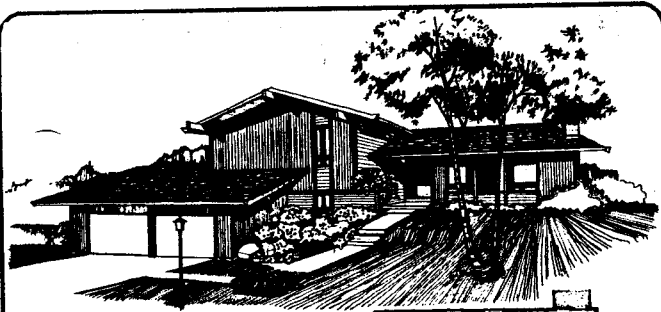
Drive to Kenmore light on Bothell Way NE. Turn right on Juanita Drive and follow Kingsgate signs to N. E. 132nd and 116th N. E.



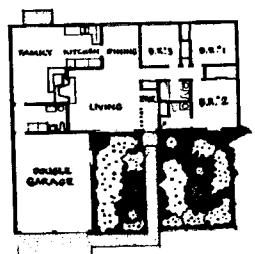
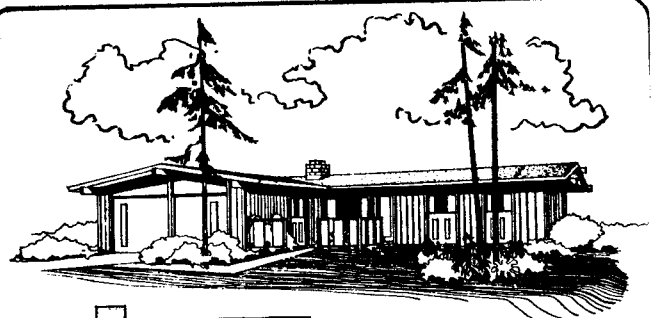
### Lady Marie

A two-story colonial with four bedrooms, full basement. Two baths with vanity. Large terraced kitchen. Stanley Donogh, Jr. Builder.

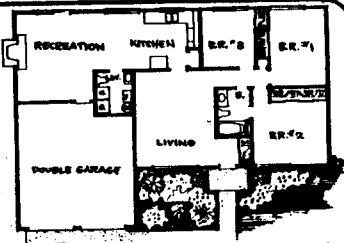
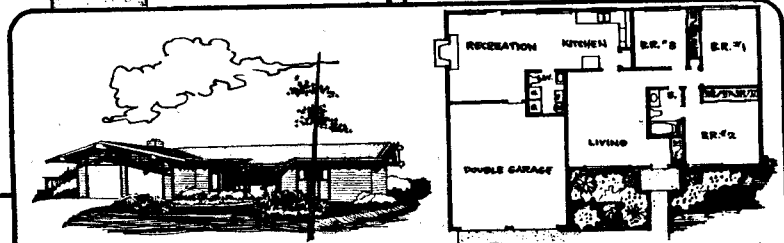




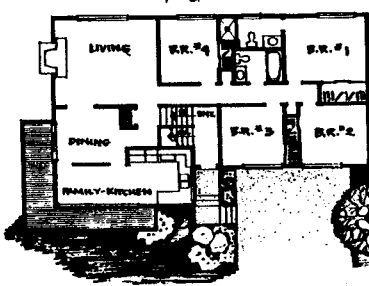
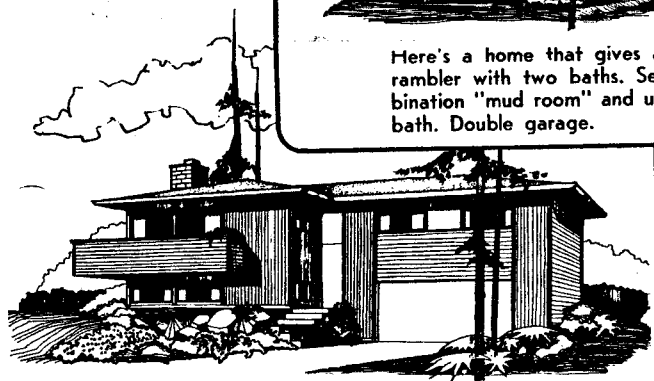
A tri-level, three bedroom home. Unique styling available in Oriental or Western exterior. Features recreation room. Large storage-utility room. Double garage.



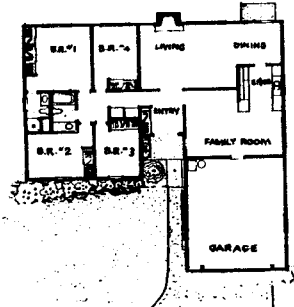
Court yard entry home with dining "L" off formal living room. Large master suite. A four bedroom, two bath home in western modern exterior.



Here's a home that gives a lot of living. Three-bedroom rambler with two baths. Separate family room with combination "mud room" and utility off back door entry. Third bath. Double garage.



A large spacious four bedroom, full basement home. Unique entry and styling. Two baths. Formal dining room or large ranch-style kitchen design. Available in contemporary or western modern exteriors.



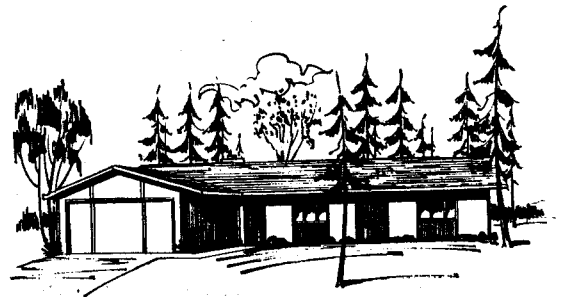
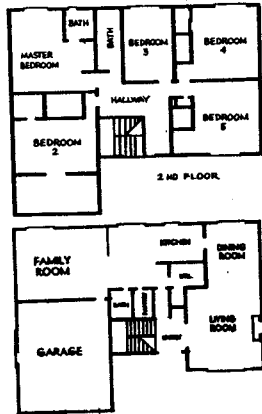
A popular north-west favorite. Three bedroom, two bath home with family room and two-car garage. Large family utility room.





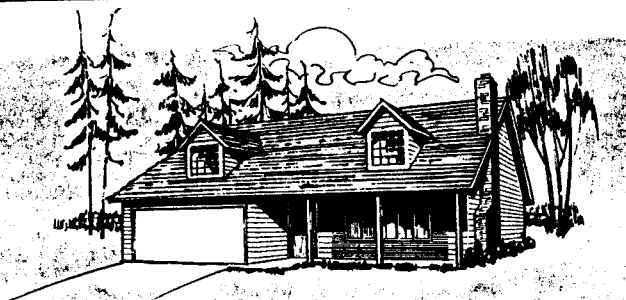
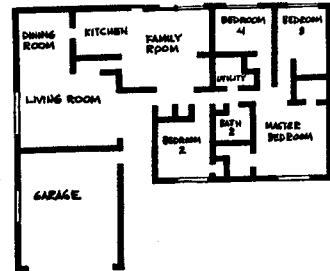
### Lady Victoria

Two-story majestic Victorian design featuring five bedrooms, three baths. Family room, terraced kitchen. Sunken living room and rec room.



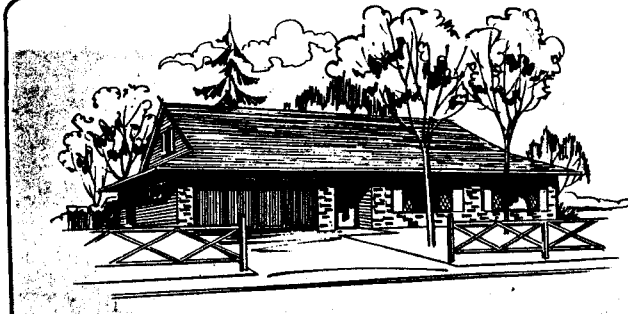
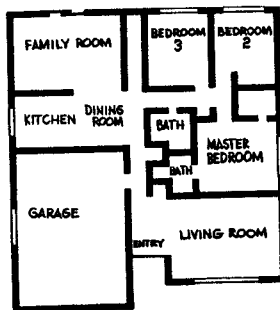
### Lady Cassandra

... of contemporary design, a four bedroom 2 bath home with sunken living room formal dining room and terraced kitchen.



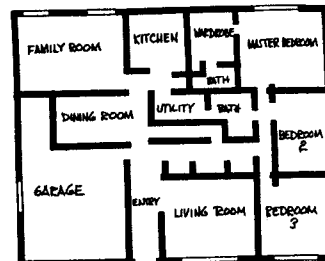
### Lady Charlotte

New England "Salt Box" design. A three bedroom, two bath home with formal dining room. Large unfinished upstairs affords expansion to six bedrooms.

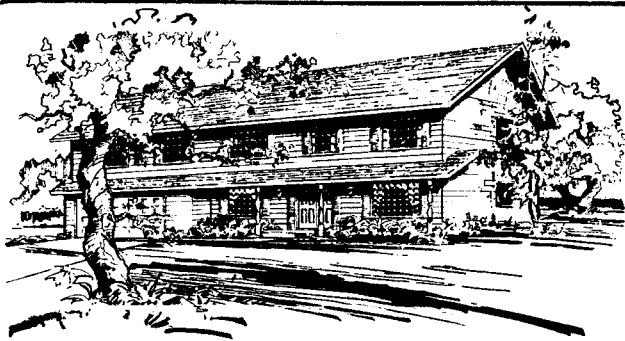


### Lady Katherine

Exceptionally large main floor plan with three bedrooms, two baths and utility. Wide entry hall to sunken living room and recreation room. Unfinished upstairs for future expansion.

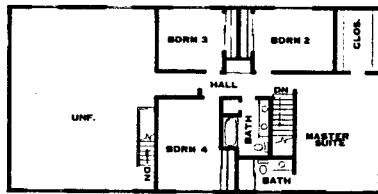


**STAN DONOGH Jr., Builder**



### The Chancellor

Five bedroom home with expandable to four more! Three baths, large main floor family room with fireplace and paneled walls. Pantry-kitchen. Walk - in closets in master suite.

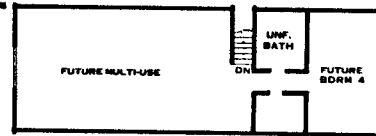


SECOND FLOOR PLAN 8055

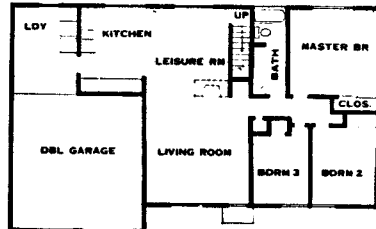


### The Empress

Western modern design, this popular four bedroom, full basement home features two fireplaces, large living room and formal dining room. Two full baths.



SECOND FLOOR PLAN 8067

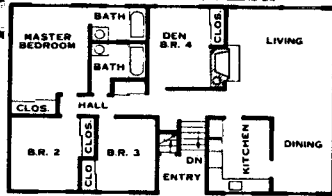


FIRST FLOOR PLAN 8067

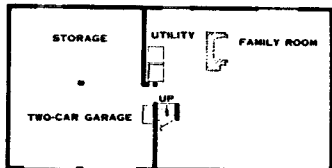


### The Sovereign

Five bedrooms on main floor. Large family room with eating bar. . . kitchen with eating bar. Two baths. Large, unfinished upstairs with roughed-in plumbing for future expansion. Sunken living room, formal dining room.



SECOND FLOOR PLAN 8068

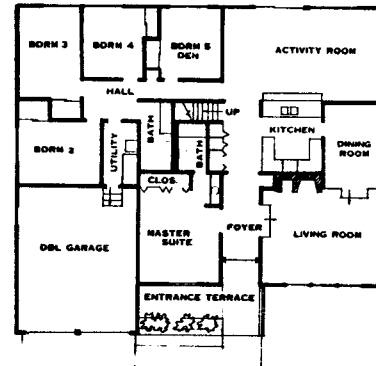


FIRST FLOOR PLAN 8068



### The Cavalier

A Western - modern in design, this three-bedroom model feature large master suite with double sink. An economy home which offers expandable area upstairs.

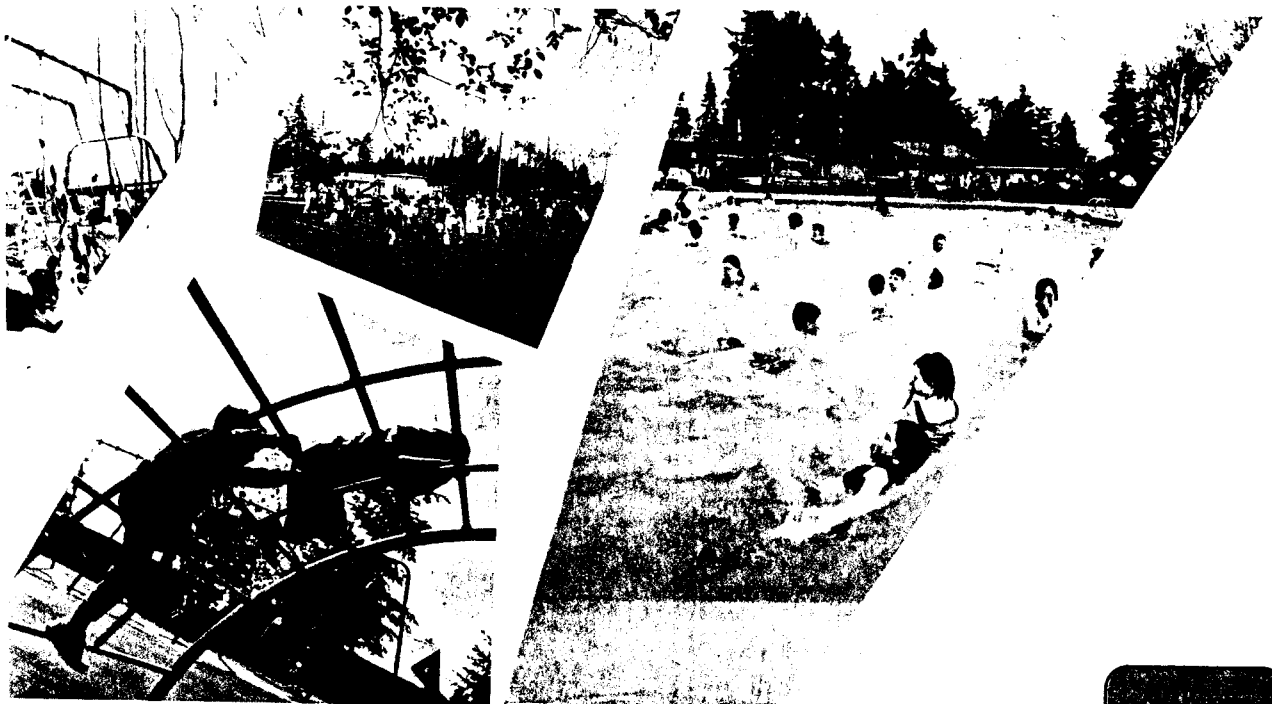


FLOOR PLAN 8040

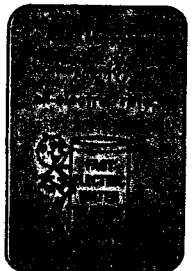


The Planned Community  
with the All New  
Equipment and Facilities  
of the Space Age Park

# sgate



The Space Age Park Features: OLYMPIC SIZE HEATED SWIM POOL  
LITTLE LEAGUE FIELDS — BASKETBALL COURT  
EQUIPPED & FENCED PLAY AREAS — BARBECUE & PICNIC AREAS



ALL NEW

# Kingsgate



Kingsgate offers a new concept of life. Live where you play with a beautiful private recreation park centrally located within a short walk of every residence. Safety is the key to every feature of the park which is the social focal point for family pleasure.